

Krantz

INTERSPARE
stentex **A** *Krantz*
ARTOS



KRANTZ SYNCRO®

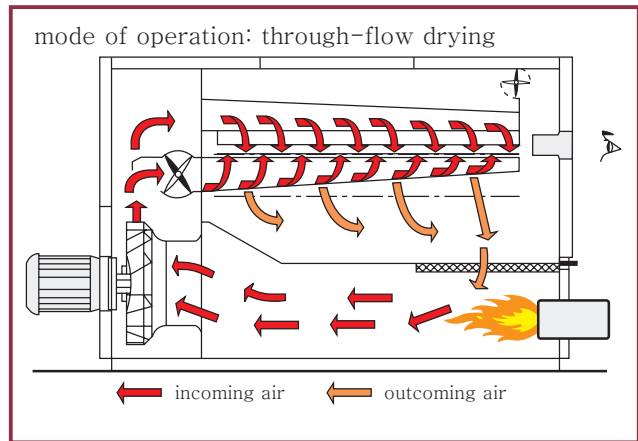
*Shrink dryer for woven
and knitted fabrics,
open-width or tubular*

KRANTZ SYNCRO®

*Controlled shrinkage,
more volume and better handle*

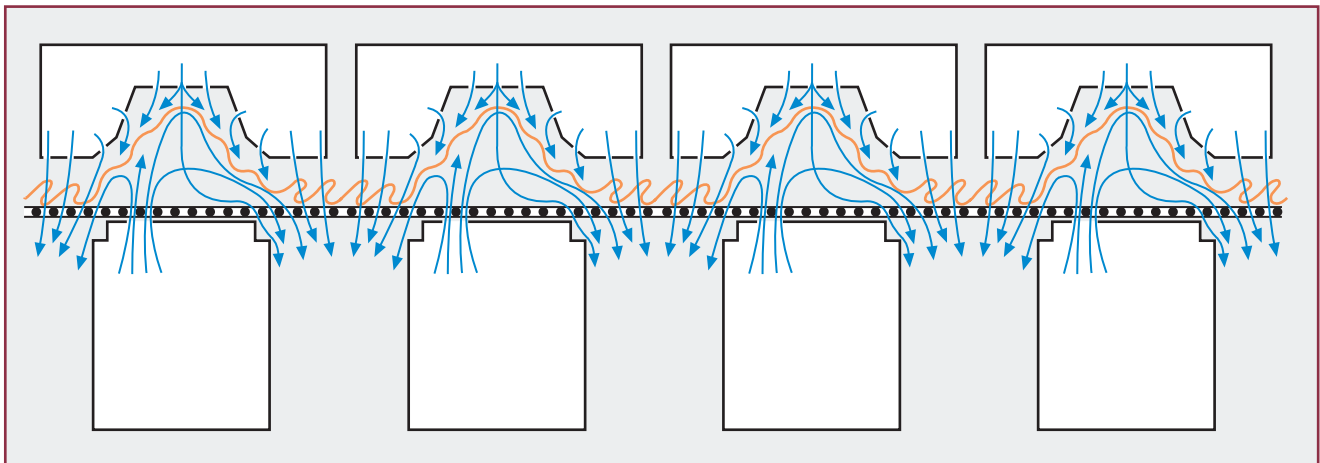
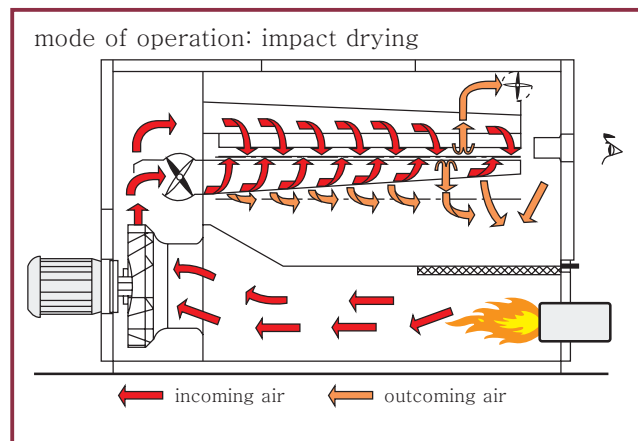
The moist fabrics (single or multi-web) are taken from the entry under low tension and fed with adjustable overfeed (up to 200%) onto a screen conveyor belt.

Depending on the fabric type, the operator can choose between impact and through-flow drying. The machine also offers continuously variable adjustment of the airing intensity and hence of the fabric dynamics.



OTHER EQUIPMENT DETAILS

- Stepped nozzles
- Econ-Air air flow control system (European patent)
- Fan-assisted gas burner
- Removable filter screens
- Tumbler unit



On its way through the machine, the fabric web is continuously dried with heated air. To this end, the circulating air is fed simultaneously into the nozzle systems above and below the fabric web.

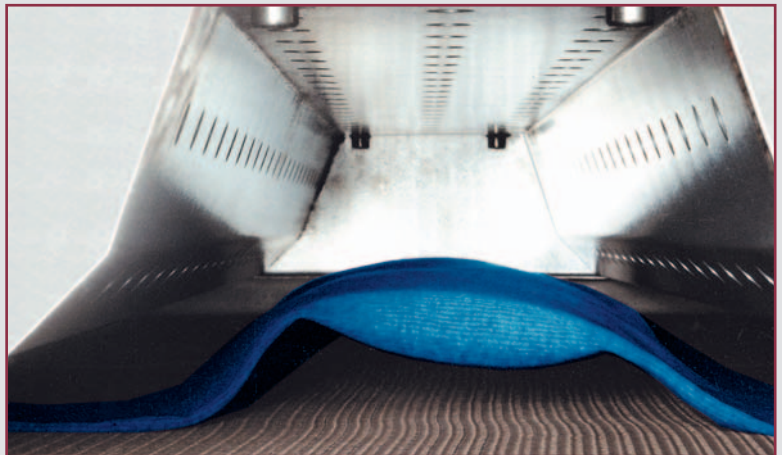
KRANTZ SYNCRO®

*All these demands are met by the
Krantz Syncro®*

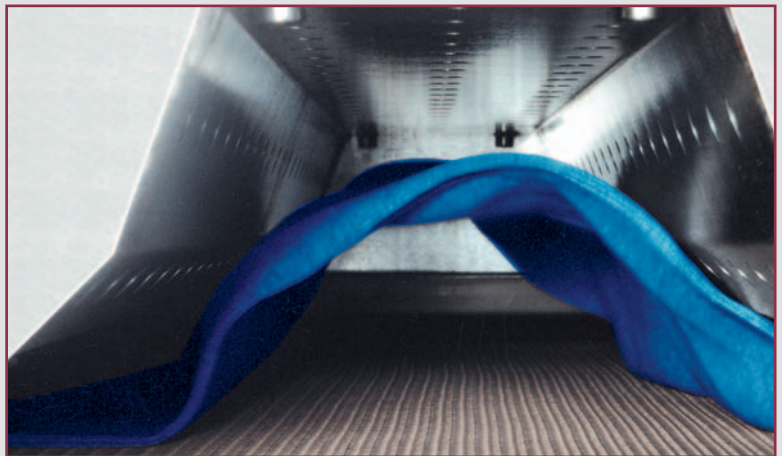
THE KRANTZ SYNCRO® ...

- permits high production speeds with light and heavy goods and with tubular fabrics.
- works at overfeeds of up to 200% for slow, gentle drying with optimum tension reduction in the fabric.
- delivers soft, voluminous fabric thanks to high fabric dynamics during the dryer passage.
- uncurls selvages of open-width tubular knitted fabrics as they pass through the dryer.
- permits development of three-dimensional and expressive structures during the dryer passage.
- possesses a high specific drying capacity.
- is easily accessible, and the circulating air filters can be cleaned during operation without stopping the machine.
- permits a high level of moisture enrichment of the circulating air thanks to exhaust air control systems and internal air transport ducts.
- offers low drying costs thanks to low specific energy consumption.

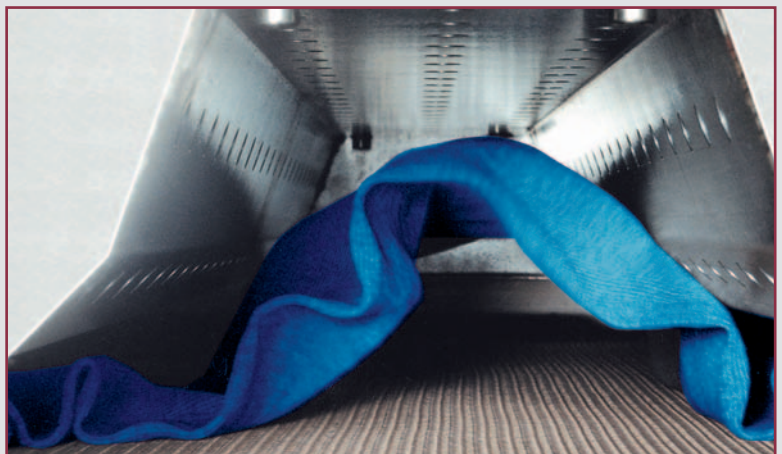
FABRIC LAYERS IN DRYER



Overfeed 25 %



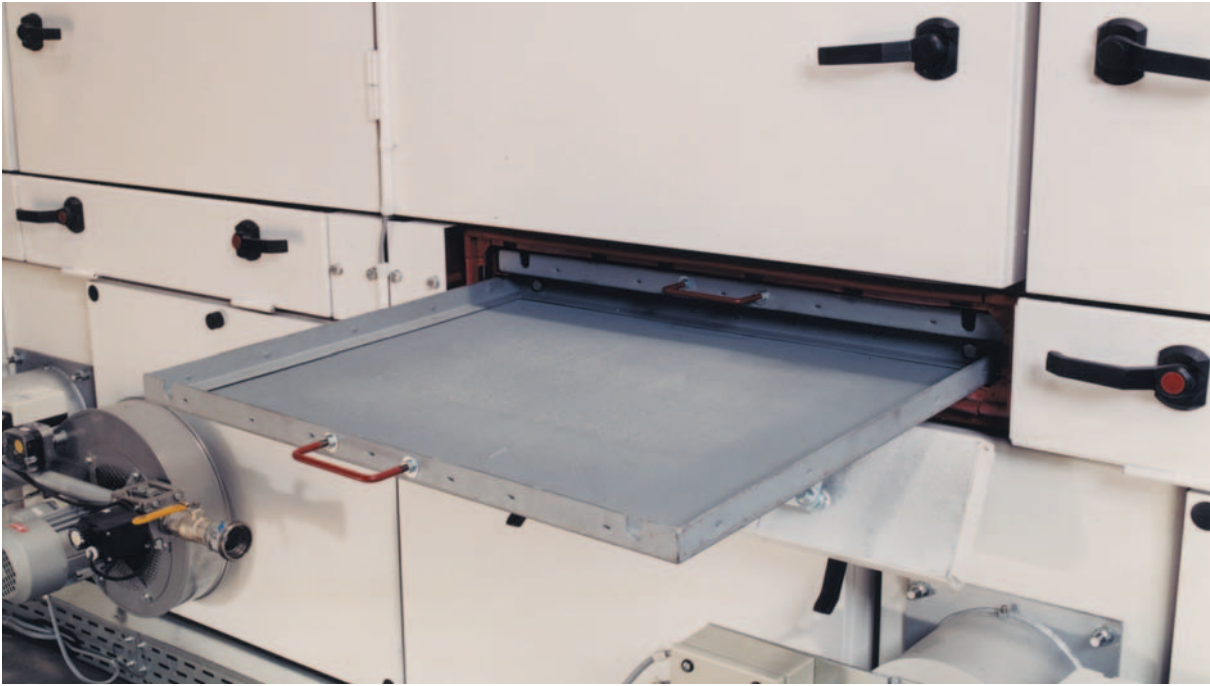
Overfeed 40 %



Overfeed 115 %

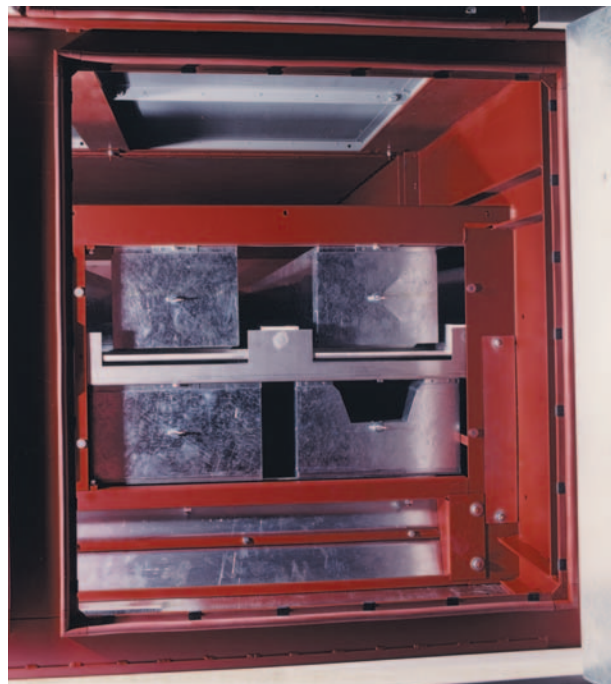
KRANTZ SYNCRO®

*Low maintenance requirements and
easy accessibility of the dryer*



The circulating air filters (removable filter screens) can be pulled out, checked and cleaned on the spot without having to stop or open the dryer.

Two large hinged doors per section
allow easy access to the drying
chamber. The covers of the finger
nozzles can easily be opened for
cleaning.



KRANTZ SYNCRO®

*The key to low-tension drying
of knitted and woven fabrics*



The Krantz Syncro® shrink dryer is designed for finishing woven and knitted fabrics. It can be used for

- drying,
- shrinking,
- intermediate drying and
- effect drying.

Whether for tubular or open-width goods, the Krantz Syncro® is excellently suitable for

- achieving controlled shrinkage,
- developing volume and
- improving handle.

These three finishing effects are of the utmost importance for the quality of the fabric and hence for its sales value.

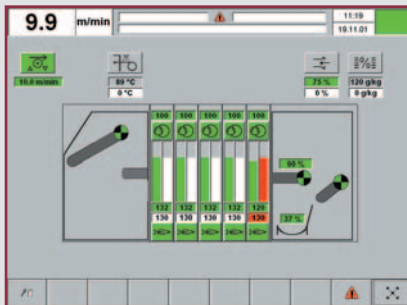
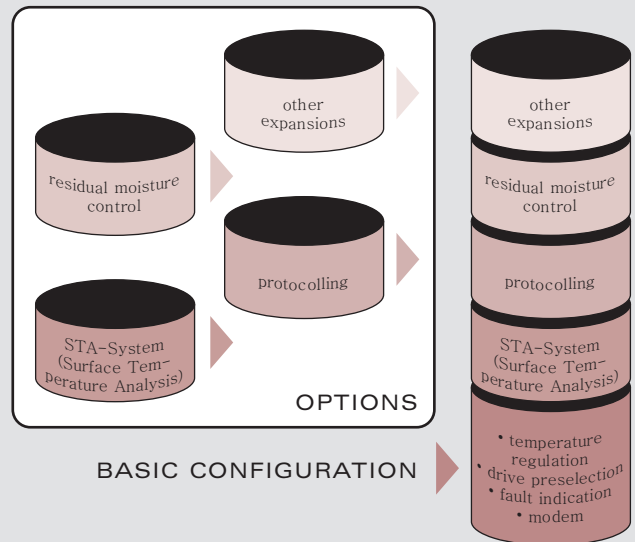
**PREDESTINED FOR FAIRLY LARGE PRODUCTION VOLUMES,
THE KRANTZ SYNCRO® NOT ONLY SATISFIES THE HIGHEST
STANDARDS OF FINISHING QUALITY, BUT ALSO KEEPS
PRODUCTION COSTS DOWN. EXACT REPRODUCTION OF
RESULTS IS POSSIBLE.**

MORE FLEXIBLE PRODUCTION AND CONVENIENT OPERATION

The Syncro® is equipped with the expandable Optimatic automation system, the standard version of which has three modules:

- Fabric drive control
- Heating control and temperature regulation
- Fault indication

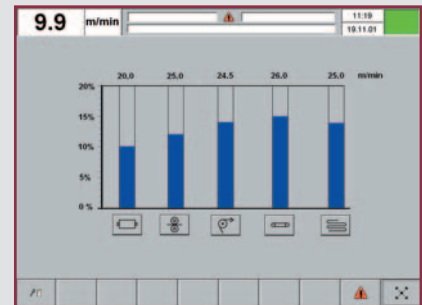
The standard configuration of the Optimatic also includes a modem for remote diagnosis and for technical assistance with solving any problems.



Menu: range display*



Menu: drives*



Menu: shrink monitoring*

MAIN BENEFITS OF THE SYSTEM FOR THE OPERATOR

- Process visualisation
(= everything at a glance)
- Rapid access to all operating parameters
(= lower reject rate)
- Rapid localisation and rectification of any faults
- Rapid adaptation to different fabric qualities
- Exactly reproducible processing results
- Operator errors largely eliminated thanks to automatic setup

*Examples of extended process visualisation menus

Interspare GmbH
Röntgenstraße 8
D-21465 Reinbek
Germany

Tel.: +49 40 727 767 - 0
Fax: +49 40 727 767 - 10
EMail: info@interspare.com

<http://www.interspare.com>