

Krantz

INTERSPARE
Stantex **ARTOS** *Krantz*



KRANTZ K30

*Single-layer stenter
for knitted and
woven fabrics*

KRANTZ K30

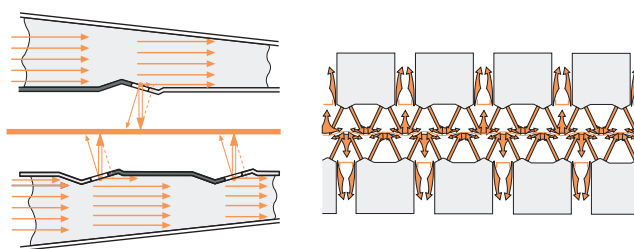
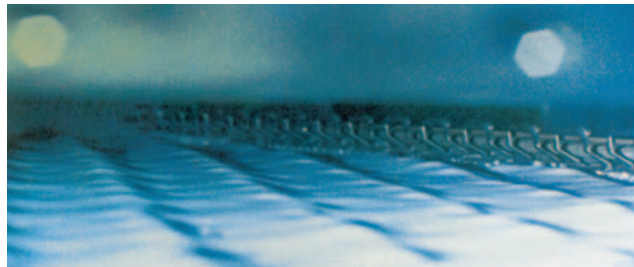
Best fixation and residual shrinkage values by Convey-Air® nozzle system

In the drying section, the arrangement of the nozzles in the worldwide well-known and proven Convey-Air® system creates a special cushion effect that ensures absolutely uniform “floating” of the fabric. This permits a permanent relaxation of the fabric before the actual fixation process.

The arrangement of the air nozzles and the vertical air outlet at right-angles to the fabric web prevent even delicate fabrics from being blown sideways.

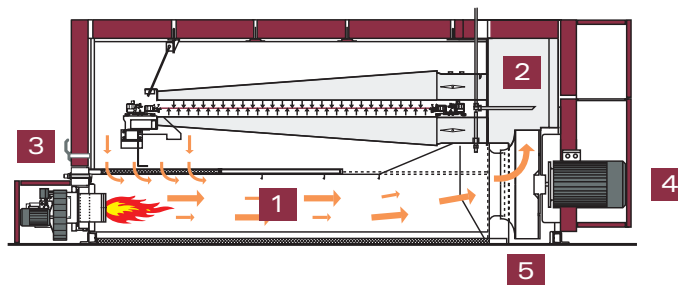
Air application is kept extremely uniform over the entire fabric.

This gentle drying makes for outstanding fixation and residual shrinkage values and a soft, bulky handle.



Optimum temperature and pressure distribution thanks to turbo mixing zone

In each stenter bay, the innovative turbo mixing zone ensures outstanding uniformity in the distribution of pressure and temperature over the entire length and width of the fabric. This optimum uniformity in drying and fixation is the most important precondition for producing fabric that meets the highest quality standards.



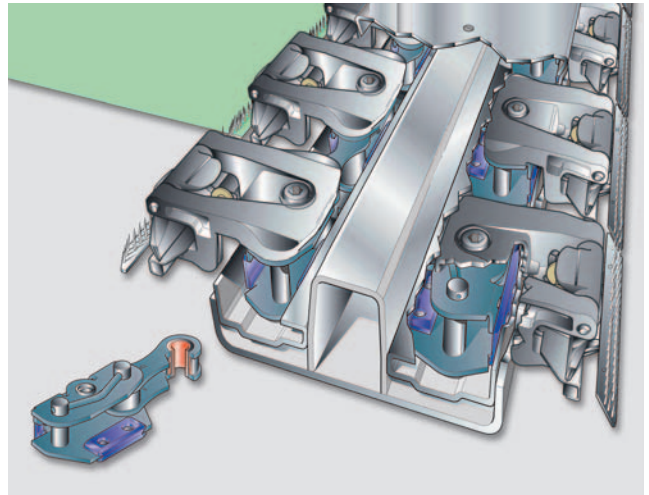
- 1** Turbo mixing zone with long lead zone and intensive air mixing.
- 2** Large pressure chamber for uniform air distribution through the nozzles.
- 3** Burner with large control range (1:40), combustion air fan insensitive to impurities.
- 4** Directly coupled fan drive (no V-belt), 2 speeds, optionally with continuously variable speed, standard motor.
- 5** Radial fan with optimised delivery for maximum water evaporation.

KRANTZ K30

*Production reliability thanks to low-maintenance,
long-life fabric transport chain systems*

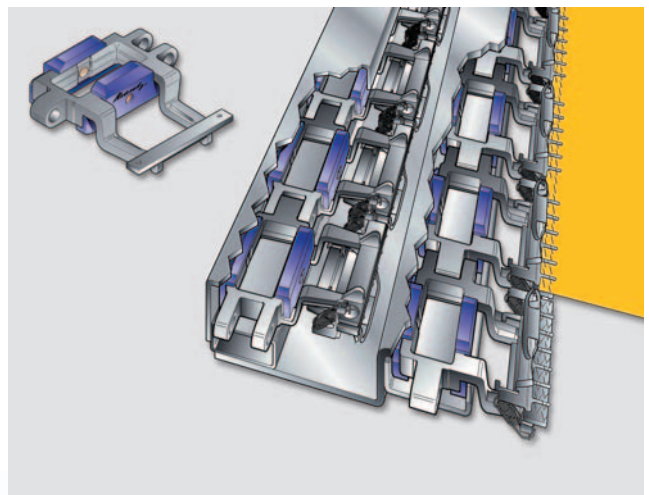
HORIZONTAL FABRIC TRANSPORT CHAIN

- Chain proven over many years, available as clip, pin or combination chain
- Lubrication-free, low-maintenance, horizontal chain
- For speeds of up to 200 m/min in continuous operation
- Chain links coated with lubrication-free composite material (easily replaced without removing chain rail)
- Maintenance-free chain rail without wearing parts
- Automatic motorised chain tensioning
- Depinning guard (option)



VERTICAL FABRIC TRANSPORT CHAIN

- Proven in more than a thousand machines worldwide
- Robust cast chain equipped with pin bars as specified by the customer
- For speeds of up to 120 m/min in continuous operation
- Chain links coated with lubrication-free composite material (easily replaced without removing chain rail)
- Outward and return travel of chain in same plane means less external air entering the dryer
- Self-regulating chain tension
- Automatic chain bolt lubrication for temporary minimal lubrication approx. once per week
- Robust stainless steel depinning guard (option)

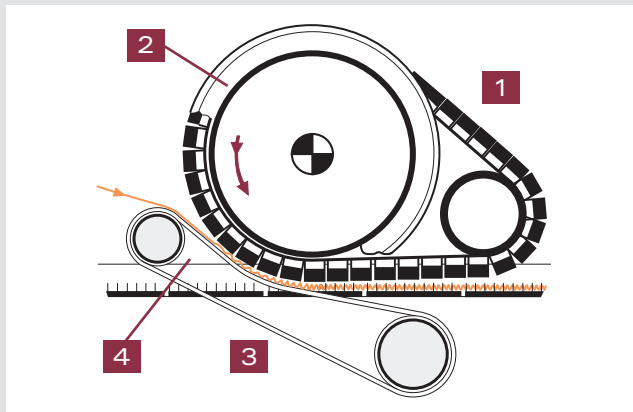


KRANTZ K30

Other technical features

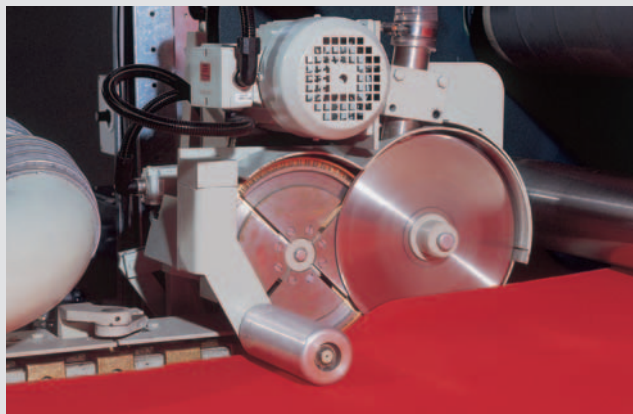
SHRINKAGE UNIT WITH BRUSH BELT

The overfeed device (shrinkage unit) is fitted with a brush belt (1). This forms very even folds; pinning of the selvages is precise, long, deep and reliable, even at overfeed rates of more than 50%. The shrinkage roller (2) is easily replaceable by means of a quick-release device. Support belt (3) and support groove (4) feed the selvedge reliably until it is held by the pins of the fabric transport chain. Pneumatic raising and lowering of the shrinkage unit.



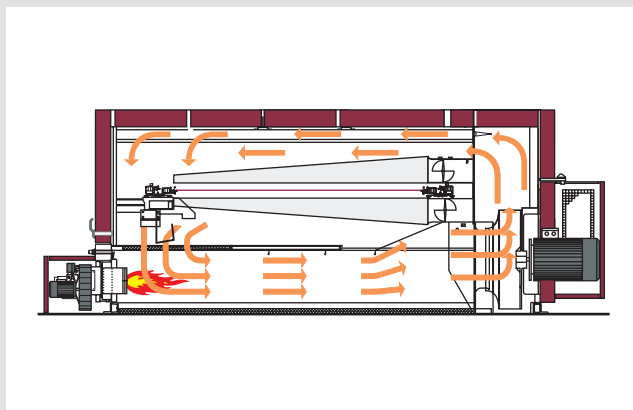
SELVEDGE TRIMMING DEVICE

For extremely narrow selvedge trimming. Driven eccentric pin wheel to guide the selvedge to the knife. Optimum uniform cut. Adapted suction tube for reliable removal of selvedge trimmings.



BYPASS FUNCTION AT CHAIN STOP

Diversion of the air current at chain stop increases the process safety at fixation processes.



KRANTZ K30

*The process result is the measure of all things,
the latest technology is the means to the end*



All over the world, people associate Krantz stenters with outstanding process results in knitted and woven fabric finishing. Today the K10 and K20 single-layer stenters have an established worldwide reputation as “classics”.

The new K30, as an uncompromising further development of the series, combines proven components with innovative technological solutions.

THE DEVELOPMENT OBJECTIVE

The aim is not merely to supply customers with a machine that operates even more efficiently. It is also to employ the latest technological advances so customers can achieve the best possible process results with it – top quality results capable of exact reproduction. And all this with an attractive, modern design.

THE HIGHLIGHTS AT A GLANCE

- Optimum temperature and pressure distribution thanks to turbo mixing zone
- Best fixation and residual shrinkage values thanks to Convey-Air nozzle system
- Energy saving and better fabric quality due to Econ-Air
- Faster production readiness and reduced electrical installation costs for the customer thanks to distributed control technology
- High availability and minimum maintenance due to digital individual drive concept
- More flexible production and convenient operation thanks to Optimatic automation system
- Utmost flexibility due to motorised individual width adjustment
- Production reliability due to long-life, low-maintenance fabric transport chain systems
- Minimum maintenance requirements

MORE FLEXIBLE PRODUCTION AND CONVENIENT OPERATION

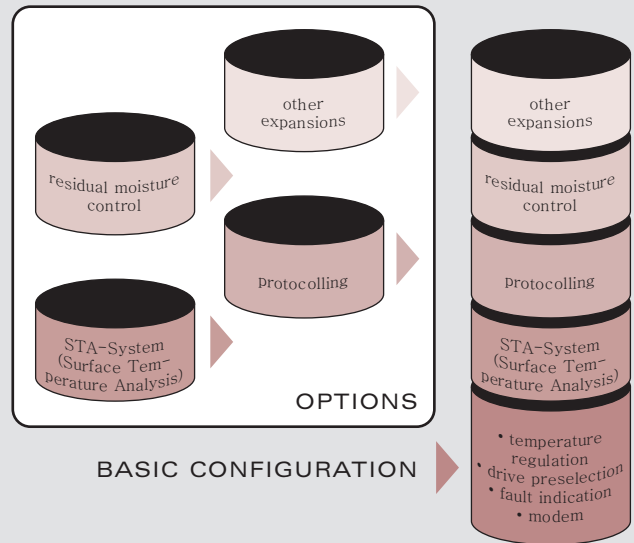
The K30 single-layer stenter is equipped with the expandable Optimatic automation system, the standard version of which has four modules:

- Fabric drive control
- Heating control and temperature regulation
- Width adjustment
- Fault indication

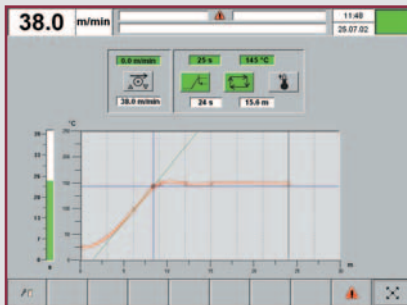
The standard configuration of the Optimatic also includes a modem for remote diagnosis and for technical assistance with solving any problems.

OPTIONS:

- Integration into existing networks
- Office access



Alternative to the operation of important machine functions independent of the PC



Monitor display - STA



Monitor display - heating control



Monitor display - overview

THE MAIN BENEFITS OF THE SYSTEM FOR THE OPERATOR:

- Process visualisation via touch-screen monitor (= everything at a glance)
- Rapid access to all operating parameters (= lower reject rate)
- Rapid localisation and rectification of any faults
- Rapid adaptation to different fabric qualities
- Exactly reproducible processing results
- Operator errors largely eliminated thanks to automatic setup
- Future-proof WINDOWS-based system

Interspare GmbH
Röntgenstraße 8
D-21465 Reinbek
Germany

Te.: +49 40 727 767 - 0
Fax: +49 40 727 767 - 10
EMail: info@interspare.com

<http://www.interspare.com>